



# Pack 85 Newsletter

February 2013

[www.pacunits.org/p85/](http://www.pacunits.org/p85/)

## 2013 *Winter* Camp Weekend

Winter Camp is February 22<sup>nd</sup>-24<sup>th</sup> at Camp Long Lake

Camp is located 1 hour and 25 minutes away in the Northern Kettle Moraine State Forest.

The cost is \$25 per person, and the activities for the weekend are only limited by weather and our imaginations.

**Signups will close on Monday, February 18<sup>th</sup>**

**If you have questions please contact:**

Jamie P

Michael K



## Roll into spring with Pack 85!!

March 19th is the pack gathering at Skateland in Waukesha. This is from 6:30 to 8:30 p.m. This year the pack will be paying for the first 60 people in the door. This includes your skate rental.

**No signups are needed - First come, first serve**

Come and roll into a healthy and happy spring with your friends and family.

**Any questions please contact:**

Randy A

### **February / April 2013 Calendar**

#### **February**

- 21 Market Day Help 5-6pm
- 22 Winter Camp @ Long Lake

#### **March**

- 6 Roundtable Flag Ceremony @ St. John Neumann, 6:45pm
- 16 Scouting for Food – Flyer/Bag Handout 9am Prairie
- 19 Pack Meeting: Den 8 - Roller Skating @ Waukesha Skateland, 6:30-8:30pm

Swamp Fox \$\$ Due

Summer Camp \$\$ Due

- 21 Market Day Help 5-6pm
- 23 Scouting for Food – Pickup @ Prairie, 9-10am

#### **April**

- 16 Pack Meeting: Song & Skit @ Prairie Gym, 6:30

Slide & Neckerchief Order

All Summer Camp \$\$ Due

- 19 PTA Carnival
- 25 Market Day (Den 6) 5-6p.m.

**If you have questions, please contact:**

#### **Cubmaster:**

Jamie P

#### **Committee Chair:**

Michael K

#### **Email the webmaster:**

p85site@gmail.com

# LOOKING AHEAD

Scouting for food is coming in March. This an excellent time for our boys to do some much appreciated community service work. Pack 85 is a perennial leader in helping the Waukesha Food Pantry. All items that are collected stay in the city of Waukesha and we need everyone's help to be successful.

Bag distribution will be on the 16<sup>th</sup> at 9:00 and pick up is the 23<sup>rd</sup> at 9:00a.m. The meeting place for both dates is at Prairie school. If you can only make one of the two days please shoot for the 16<sup>th</sup> as distributing bags requires the most hands, feet, and effort. The pick up on the 23<sup>rd</sup> is where you get to see the fruits of your labor.

**If you have questions please contact:**

Michael S



## OPEN POSITIONS

The Pack is grateful to have some willing volunteers step into the open roles that help make Pack 85 successful. We are excited to see where these new leaders will take Pack 85 as we move through this transition. We still have positions that we need filled:

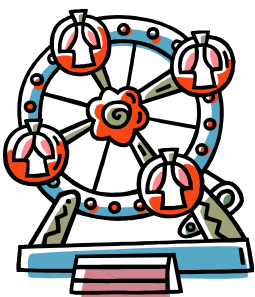
**Assistant Cubmaster-open**

**Assistant Committee Chair-open**

If you have interest or questions pertaining to the open positions, please contact:

Michael K  
Jamie P

Recruitment Idea,  
The Pack is asking all scouts to wear either their uniforms or Pack T-shirts on school days that have Pack events scheduled. Hopefully this will drum up interest in Scouting if other boys see our Scouts dressed in their uniforms.



## HELP IS NEEDED!!!

The Prairie PTA Carnival is March 19th. The PTA is our charter organization and we were asked to run one of the games/events. The Carnival is a fun time for all and helping with a game is really good exposure for the pack. The boys will have a great time running the games while the parents supervise.

If you are going to the Carnival anyway, helping with a game will give you something to do. For information on how you can help, please contact Jamie P