



Pack 85 Newsletter

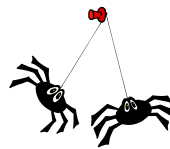
October 2011

www.pacunits.org/p85/

2011 Cub Scout Safe Halloween

Remember our Pack meeting for October will be at Indian Mound Scout Reservation in Oconomowoc, WI 5:00 pm to 8:00 pm. Food can be purchased in the dining hall at mealtime. The dining hall is open from 1 to 8 p.m. A \$3 plate includes a hot dog, chili dog, or sloppy Joe, chips, cookie and Kool-Aid.

Be sure to come dressed in your costume!!!



Activities for the evening will be Hay rides, Haunted House, Games and a Luminary Trail, and don't forget about the Pumpkin and gourd decorating.

IMR is using a roster system for check in purposes. Pack 85 has 102 people going so it may be difficult to keep track of everyone. Families that want to arrive earlier should bring a sheet labeled Pack 85 that includes their names, address, and phone number. Mary Hensel will have a master roster with all the names on it. This event is paid in full so please bring only those that are signed up and paid for.

Remember...

At our October meeting if you plan on attending River Rats please contact Steve Carlson or Cub-o-Ree please contact Mary Hensel.

Calendar

October

15th- Pack Meeting
Safe Halloween

15-16 Popcorn Checkout
RIVER RATS \$ DUE
CUB-O-REE \$ DUE

November

10th Market Day *Den 6*

15th Pack Meeting
Song & Skit night/
Prairie Gym 6:30 pm
Derby cars handout
COUNTRY SPRINGS \$ DUE

December

7th Market Day *Den 4*

20th Pack Gathering
Country Springs
4:00 - 8:00 pm

Cubmaster:
Jamie

Committee Chair:
Michael K

Email the webmaster:
p85site@gmail.com

Splash with the Pack!

Another tradition of the pack is meeting together in December to enjoy some fun with family and friends at Country Springs Waterpark. This year it will be on December 20th from 4:00 pm to 8:00 pm. Admission prices and signup sheets will be handed out soon.



2011 Winter Camp Weekend

Pack 85 will be making its annual winter trek to Camp Long Lake, located 1 hour and 25 minutes away in a beautiful Northern section of the Kettle Moraine State Forest on Long Lake.

We stay in a cabin, which has two barracks-style rooms with bunk-beds that accommodate 20 people in each room. There are also two smaller rooms that can each hold 4 people. These are typically reserved for female campers as BSA requires they have separate accommodations in a group setting. The cabin has a full kitchen, a main activity area, and three bathrooms.

Tiger through Webelos I's can join a parent on this Friday to Sunday overnight. Activities for the weekend are limited only by the weather and our imaginations. Activities typically include sledding, skiing, hiking, ice fishing, indoor and / or outdoor cooking and food prep. Games and a special scout craft.

Date: March 9-11 2012

Cost: \$25 per person; cost may vary somewhat based on attendance and activities.

Payment due in full: By the January Pack meeting.

